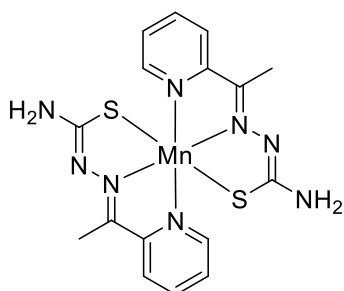




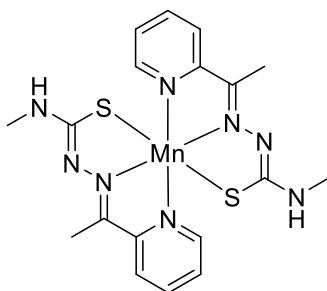
# QUIMIOTECA

## COMPLEXOS METÁLICOS

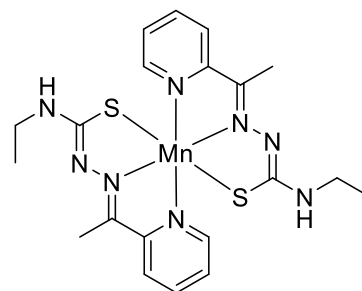
### Complexos de Manganês (Mn), Níquel (Ni) e Prata (Ag)



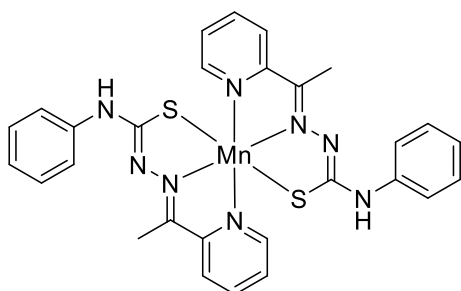
$C_{16}H_{18}MnN_8S_2$   
MM: 441,43



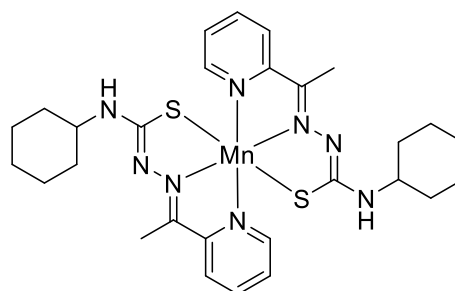
$C_{18}H_{22}MnN_8S_2$   
MM: 469,49



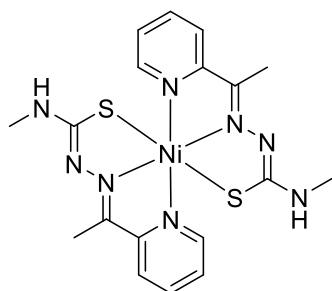
$C_{20}H_{26}MnN_8S_2$   
MM: 497,54



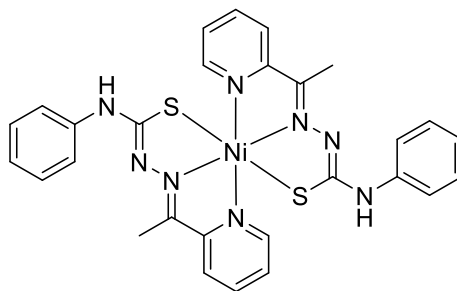
$C_{28}H_{26}MnN_8S_2$   
MM: 593,63



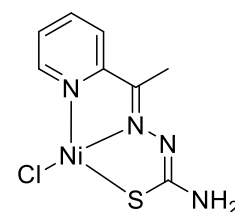
$C_{28}H_{38}MnN_8S_2$   
MM: 605,73



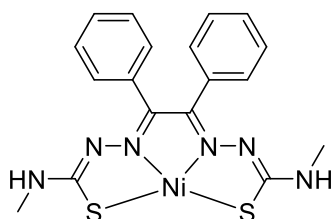
$C_{18}H_{22}N_8NiS_2$   
MM: 473,24



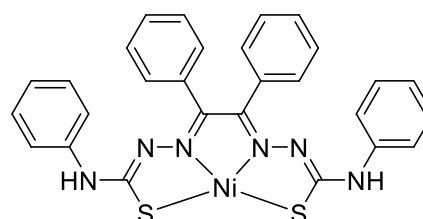
$C_{28}H_{26}N_8NiS_2$   
MM: 597,39



$C_8H_9ClN_4NiS$   
MM: 287,39



$C_{18}H_{18}N_6NiS_2$   
MM: 441,20

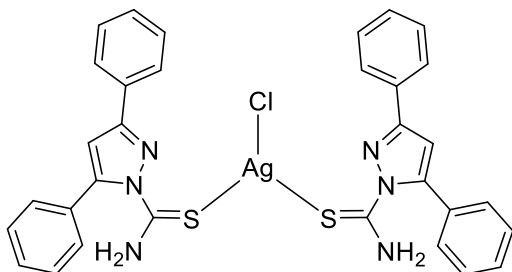


$C_{28}H_{22}N_6NiS_2$   
MM: 565,34

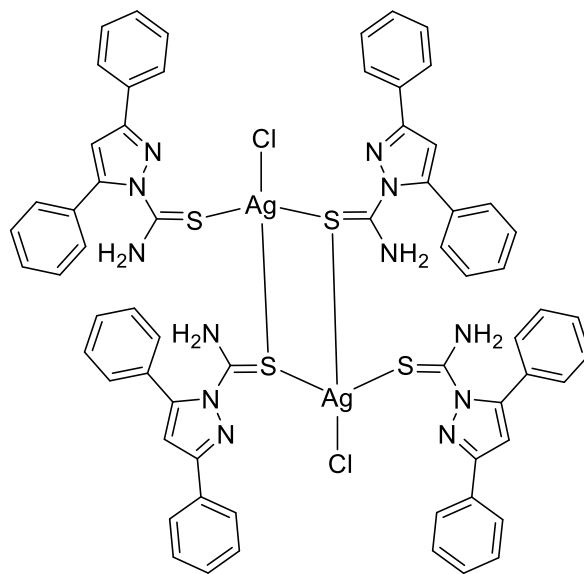


# QUIMIOTECA

## COMPLEXOS METÁLICOS



$C_{32}H_{26}AgClN_6S_2$   
MM: 702,04  
CCDC 1899018



$C_{64}H_{52}Ag_2Cl_2N_{12}S_4$   
MM: 1404,08  
CCDC 1899019