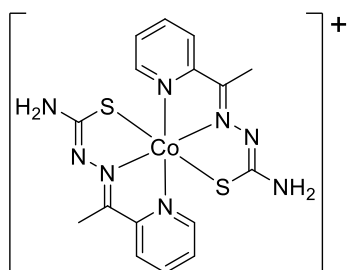




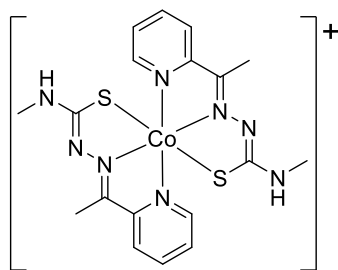
QUIMIOTECA

COMPLEXOS METÁLICOS

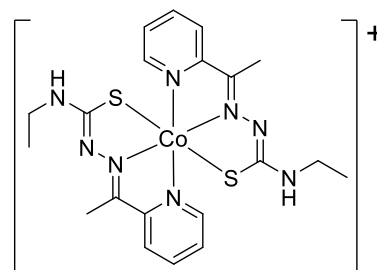
Complexos de Cobalto (Co), Cobre (Cu) e Ferrocenos



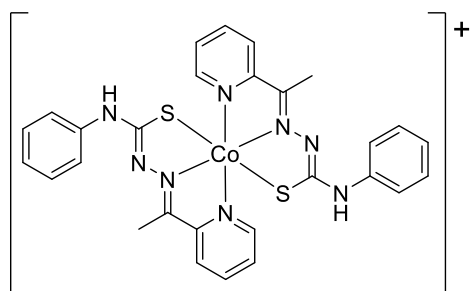
$C_{16}H_{18}CoN_8S_2$
MM: 445,43



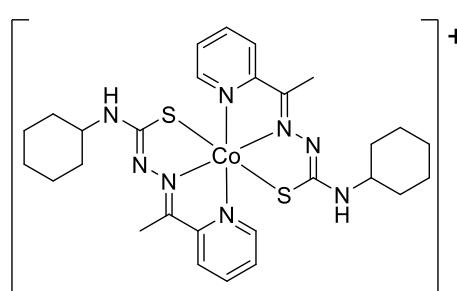
$C_{18}H_{22}CoN_8S_2$
MM: 473,48



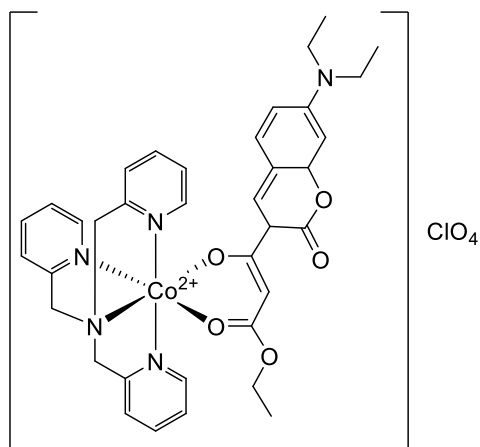
$C_{20}H_{26}CoN_8S_2$
MM: 501,54



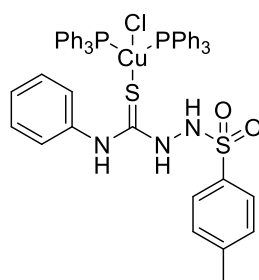
$C_{28}H_{26}CoN_8S_2$
MM: 597,63



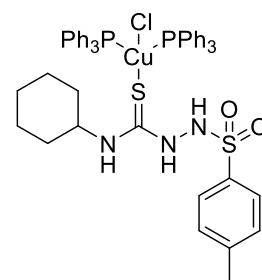
$C_{28}H_{38}CoN_8S_2$
MM: 609,72



$C_{36}H_{38}ClCoN_5O_9$
MM: 779,11
CCDC 1938488



$C_{50}H_{45}ClCuN_3O_2P_2S_2$
MM: 944,99

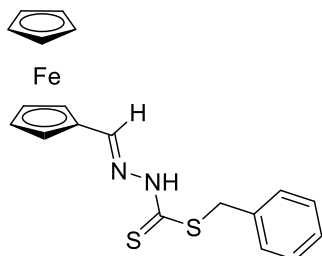


$C_{50}H_{51}ClCuN_3O_2P_2S_2$
MM: 951,04

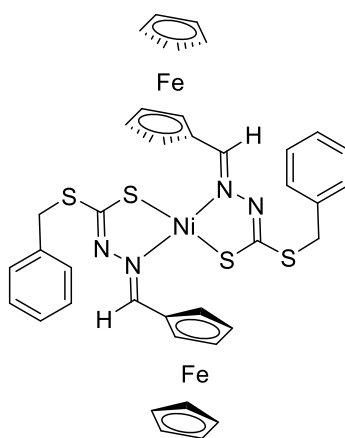


QUIMIOTECA

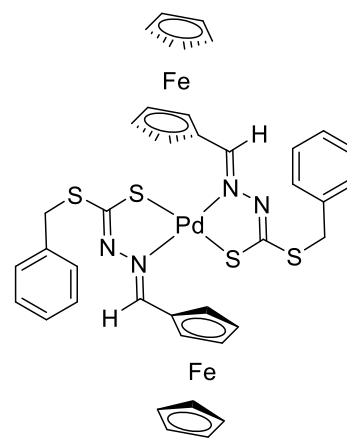
COMPLEXOS METÁLICOS



$C_{19}H_{18}FeN_2S_2$
MM: 394,33



$C_{38}H_{34}Fe_2N_4NiS_4$
MM: 845,34



$C_{38}H_{34}Fe_2N_4PdS_4$
MM: 893,07